



2835 LED Strips Light

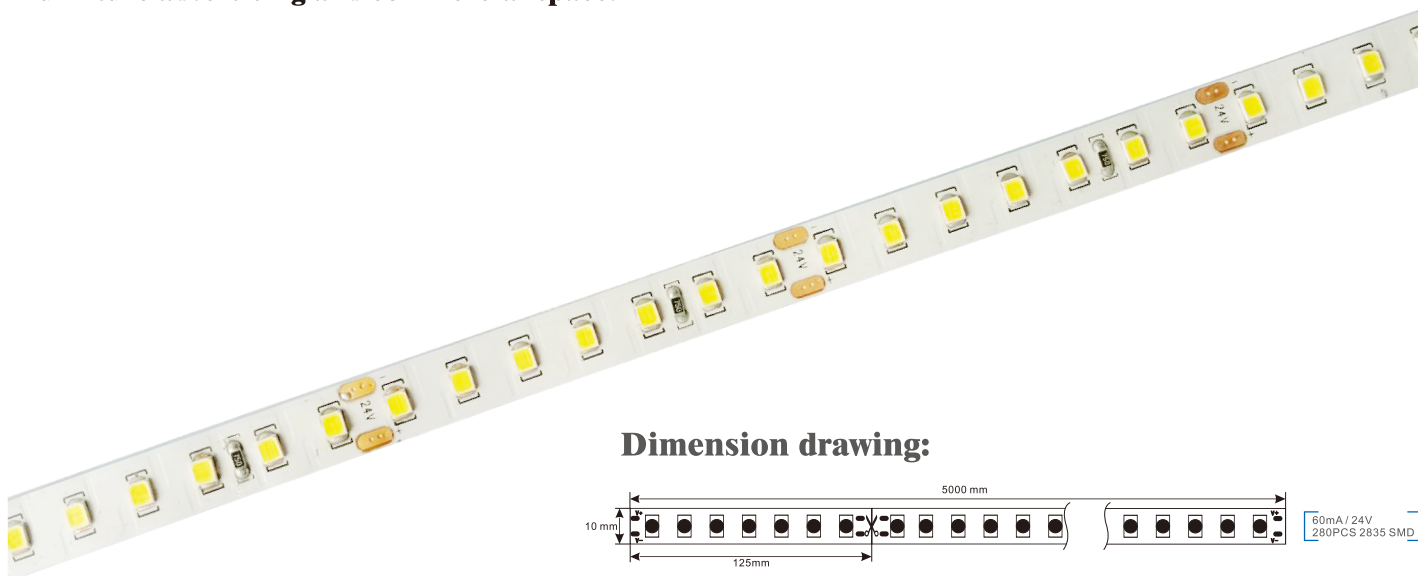
LED KING LED Strip all use of automated production equipment.

ALL SMD LEDs and flexile PCB from famous enterprises offer.

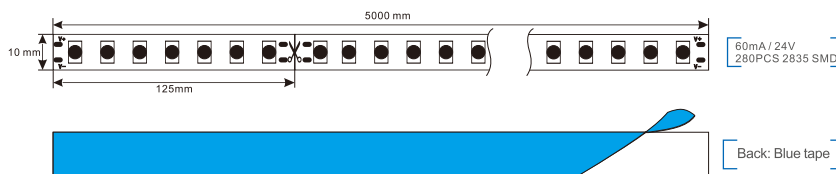
ALL Products PASS with CE RoHS and AK testing standards.

We use SMD 2835 which provide CRI>90(white 3000K-6000K)

The products widely use for the space main lighting auxiliary lighting and decorative lighting of indoor, furniture advertising and commercial space.



Dimension drawing:



Part No of LED King	Voltage	LED QTY /Metre	Current (A/Metre)	Colour	Power (Watt/Metre)	Lumen /Metre	CRI	IP Rang	Beam Angle	Max Length to Connected
K-2835-D56IP20-60mA-CW	DC24V	56pcs	0.42A	6000K	10W	1400Lm	>90	IP20	120°	≤5m
K-2835-D56IP20-60mA-NW	DC24V	56pcs	0.42A	4000K	10W	1400Lm	>90	IP20	120°	≤5m
K-2835-D56IP20-60mA-WW	DC24V	56pcs	0.42A	3000K	10W	1400Lm	>90	IP20	120°	≤5m
K-2835-D56IP65-60mA-CW	DC24V	56pcs	0.42A	6000K	10W	1400Lm	>90	IP65	120°	≤5m
K-2835-D56IP65-60mA-NW	DC24V	56pcs	0.42A	4000K	10W	1400Lm	>90	IP65	120°	≤5m
K-2835-D56IP65-60mA-WW	DC24V	56pcs	0.42A	3000K	10W	1400Lm	>90	IP65	120°	≤5m

Features:

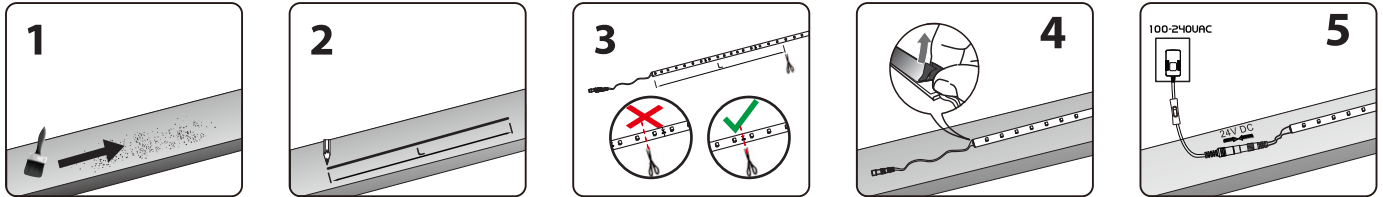
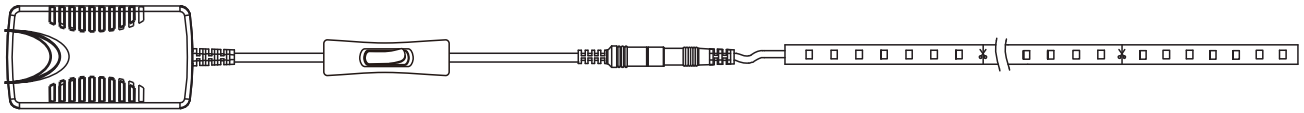
- Extremely energy-efficient.
- Super long lifetime helping to decrease maintenance costs.
- Variety of designs, matching for various applications.
- UV free and no flickering.
- Higher CRI>90.
- IP20、IP65 Rang waterproof.

Applications:

- Widely use for wall lighting.
- Indoor&outdoor decoration.
- Back light of bars.
- LED box.
- Lighting source,car decoration.
- Fluorescent lamp or tubes.

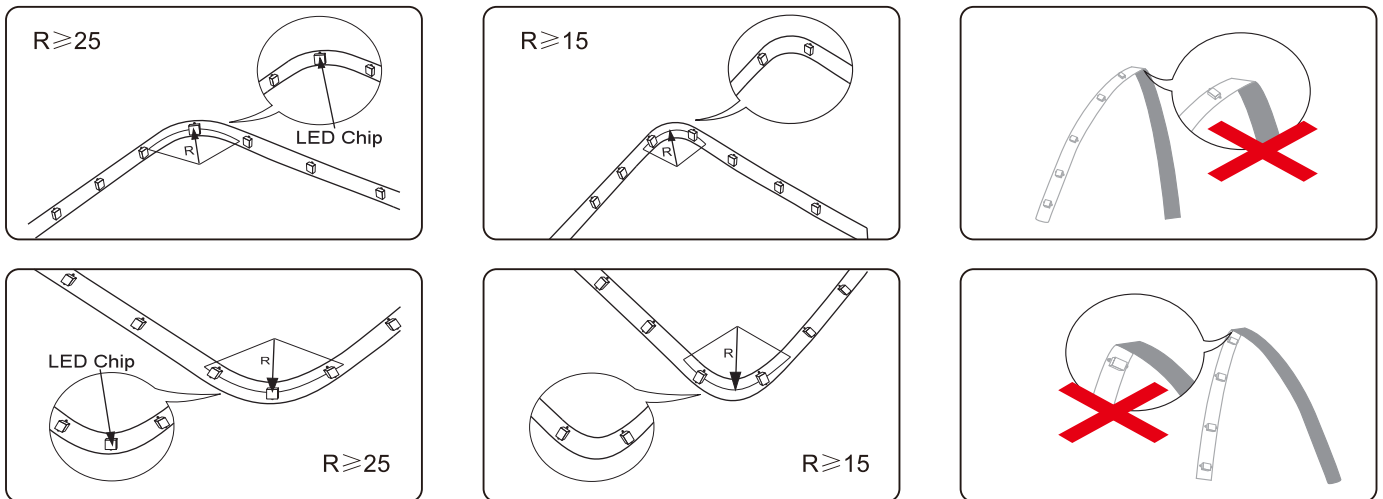


Installation instructions:



⚠ Attention

- 1.Storage Temperature:-40°C~+70°C, Operating Temperature:-25°C~+50°C.
- 2.To protect the three-core chip and ensure the life and reliability of the flexible strip, please be gentle. Squeeze and beat are not allowed.
- 3.Do not touch input port when power is on.
- 4.Please keep 20% power to protect the strip from being influenced by environments.
- 5.Please note the negative and positive polarity when you connect the wires of power supplier to avoid short circuit.
- 6.Make sure that the power supply voltage and the lighting voltage are the same.



Packing Specification

Type	FPC Width LEDs/Metre	Net Weight	Qty	Gross Weight	Demension
Non-Waterproof	10mm/56LED	0.1kg	35pcs	4.52kg	485x215x250mm
Surface Coating	10mm/56LED	0.2kg	35pcs	8.15kg	485x215x250mm



A: One strip in a roll package. Antistatic bag size: 216x245mm.

B: Roll packages in a carton. size: 485x215x250mm.



2835 LED Strips Light

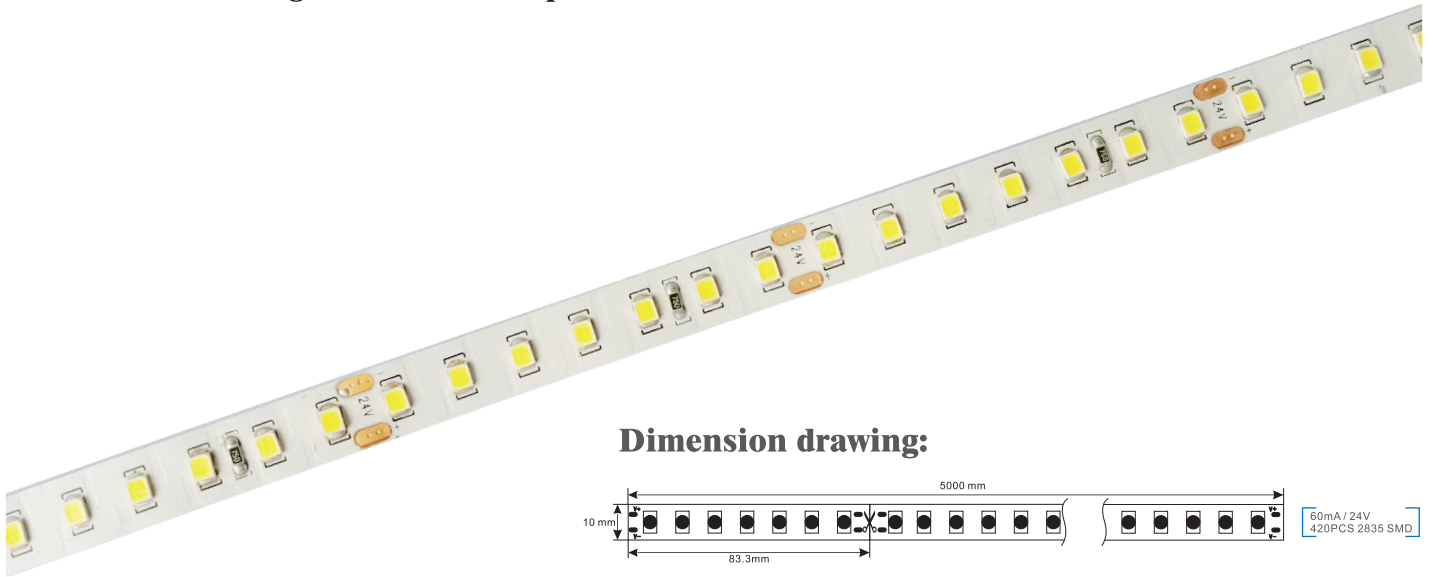
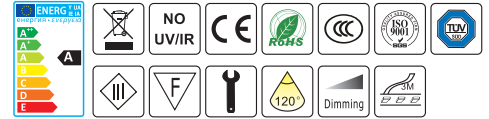
LED KING LED Strip all use of automated production equipment.

ALL SMD LEDs and flexile PCB from famous enterprises offer.

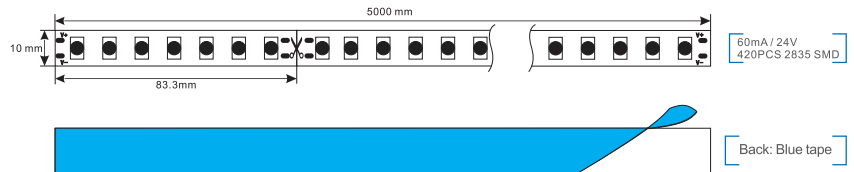
ALL Products PASS with CE RoHS and AK testing standards.

We use SMD 2835 which provide CRI>90(white 3000K-6000K)

The products widely use for the space main lighting auxiliary lighting and decorative lighting of indoor, furniture advertising and commercial space.



Dimension drawing:



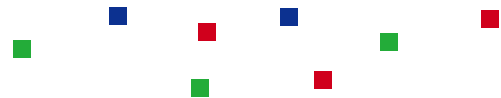
Part No of LED King	Voltage	LED QTY /Metre	Current (A/Metre)	Colour	Power (Watt/Metre)	Lumen /Metre	CRI	IP Rang	Beam Angle	Max Length to Connected
K-2835-D84IP20-60mA-CW	DC24V	84pcs	0.62A	6000K	15W	2100Lm	>90	IP20	120°	≤5m
K-2835-D84IP20-60mA-NW	DC24V	84pcs	0.62A	4000K	15W	2100Lm	>90	IP20	120°	≤5m
K-2835-D84IP20-60mA-WW	DC24V	84pcs	0.62A	3000K	15W	2100Lm	>90	IP20	120°	≤5m
K-2835-D84IP65-60mA-CW	DC24V	84pcs	0.62A	6000K	15W	2100Lm	>90	IP65	120°	≤5m
K-2835-D84IP65-60mA-NW	DC24V	84pcs	0.62A	4000K	15W	2100Lm	>90	IP65	120°	≤5m
K-2835-D84IP65-60mA-WW	DC24V	84pcs	0.62A	3000K	15W	2100Lm	>90	IP65	120°	≤5m

Features:

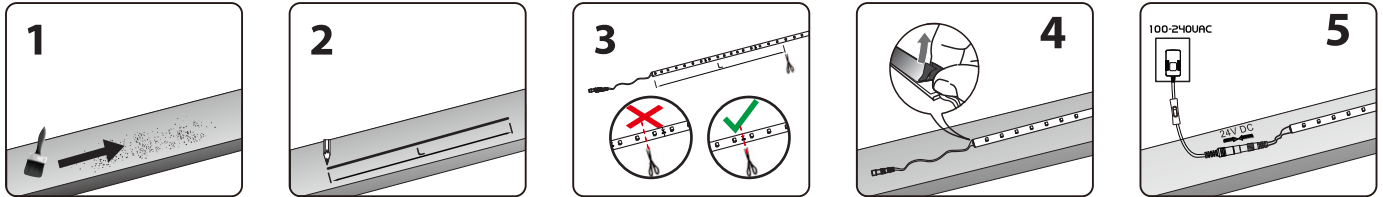
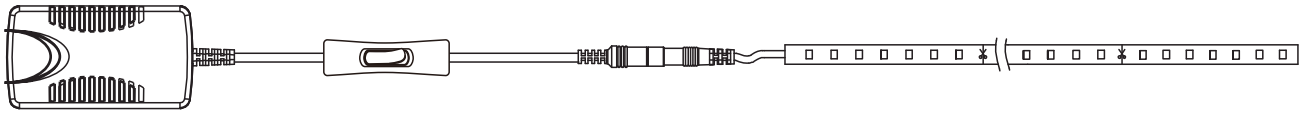
- Extremely energy-efficient.
- Super long lifetime helping to decrease maintenance costs.
- Variety of designs, matching for various applications.
- UV free and no flickering.
- Higher CRI>90.
- IP20、IP65 Rang waterproof.

Applications:

- Widely use for wall lighting.
- Indoor&outdoor decoration.
- Back light of bars.
- LED box.
- Lighting source,car decoration.
- Fluorescent lamp or tubes.

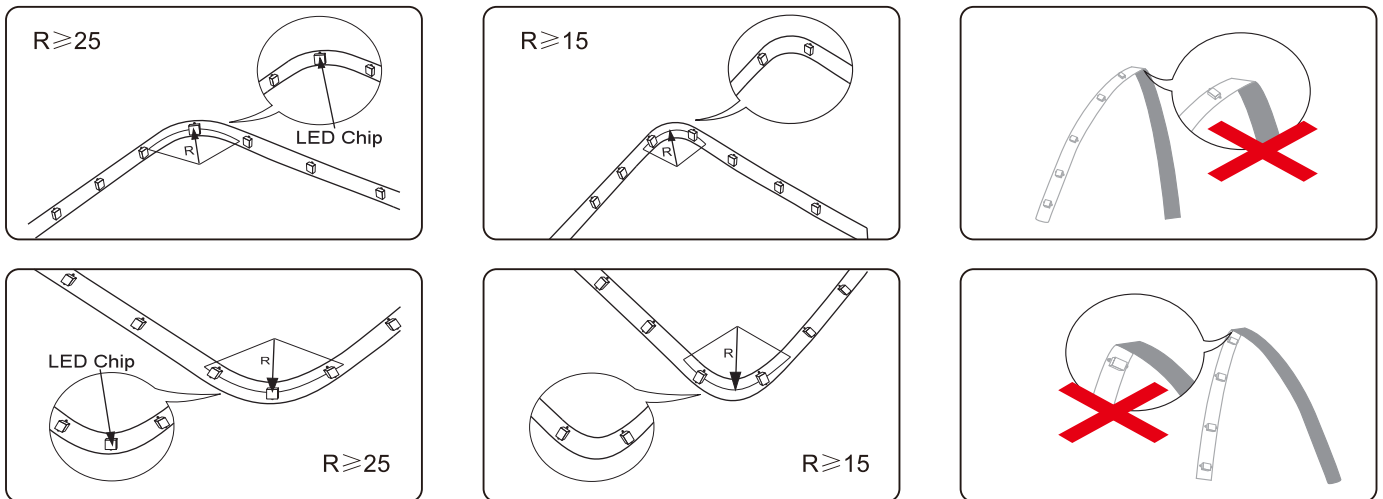


Installation instructions:



⚠ Attention

- 1.Storage Temperature:-40°C~+70°C, Operating Temperature:-25°C~+50°C.
- 2.To protect the three-core chip and ensure the life and reliability of the flexible strip, please be gentle. Squeeze and beat are not allowed.
- 3.Do not touch input port when power is on.
- 4.Please keep 20% power to protect the strip from being influenced by environments.
- 5.Please note the negative and positive polarity when you connect the wires of power supplier to avoid short circuit.
- 6.Make sure that the power supply voltage and the lighting voltage are the same.



Packing Specification

Type	FPC Width LEDs/Metre	Net Weight	Qty	Gross Weight	Demension
Non-Waterproof	10mm/84LED	0.1kg	35pcs	4.52kg	485x215x250mm
Surface Coating	10mm/84LED	0.2kg	35pcs	8.15kg	485x215x250mm



A: One strip in a roll package. Antistatic bag size: 216x245mm.

B: Roll packages in a carton. size: 485x215x250mm.



2835 LED Strips Light

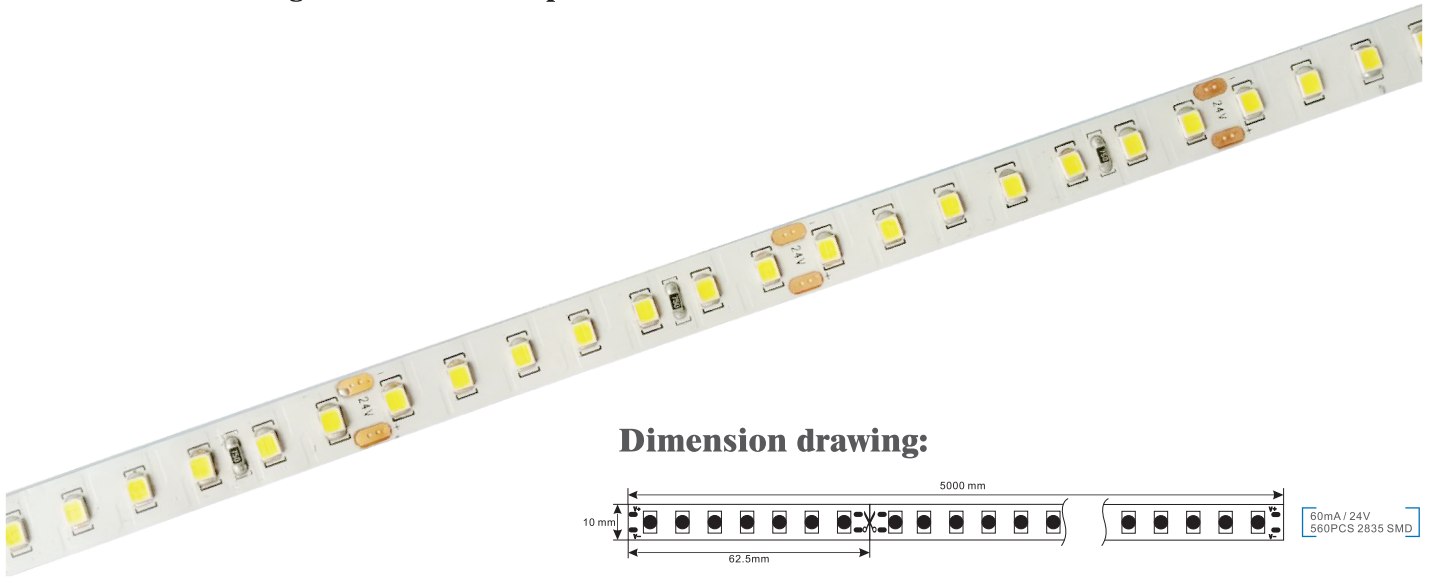
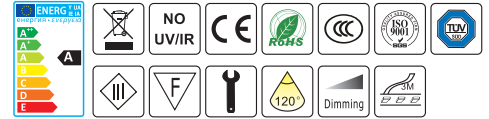
LED KING LED Strip all use of automated production equipment.

ALL SMD LEDs and flexile PCB from famous enterprises offer.

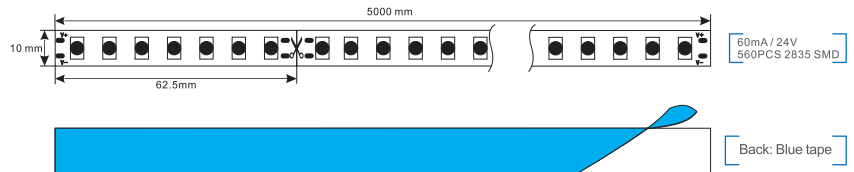
ALL Products PASS with CE RoHS and AK testing standards.

We use SMD 2835 which provide CRI> 90(white 3000K-6000K)

The products widely use for the space main lighting auxiliary lighting and decorative lighting of indoor, furniture advertising and commercial space.



Dimension drawing:



Part No of LED King	Voltage	LED QTY /Metre	Current (A/Metre)	Colour	Power (Watt/Metre)	Lumen /Metre	CRI	IP Rang	Beam Angle	Max Length to Connected
K-2835-D112IP20-60mA-CW	DC24V	112pcs	0.85A	6000K	20W	2900Lm	>90	IP20	120°	≤5m
K-2835-D112IP20-60mA-NW	DC24V	112pcs	0.85A	4000K	20W	2900Lm	>90	IP20	120°	≤5m
K-2835-D112IP20-60mA-WW	DC24V	112pcs	0.85A	3000K	20W	2900Lm	>90	IP20	120°	≤5m
K-2835-D112IP65-60mA-CW	DC24V	112pcs	0.85A	6000K	20W	2900Lm	>90	IP65	120°	≤5m
K-2835-D112IP65-60mA-NW	DC24V	112pcs	0.85A	4000K	20W	2900Lm	>90	IP65	120°	≤5m
K-2835-D112IP65-60mA-WW	DC24V	112pcs	0.85A	3000K	20W	2900Lm	>90	IP65	120°	≤5m

Features:

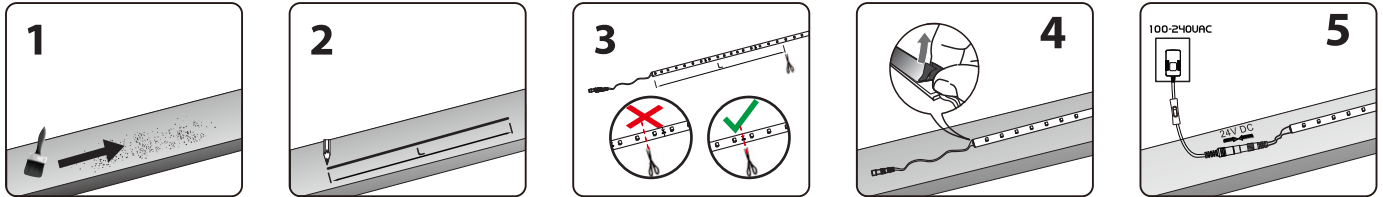
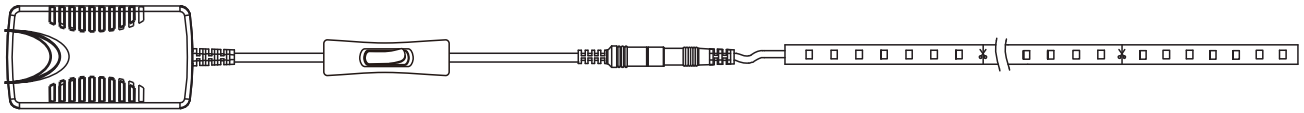
- Extremely energy-efficient.
- Super long lifetime helping to decrease maintenance costs.
- Variety of designs, matching for various applications.
- UV free and no flickering.
- Higher CRI>90.
- IP20、IP65 Rang waterproof.

Applications:

- Widely use for wall lighting.
- Indoor&outdoor decoration.
- Back light of bars.
- LED box.
- Lighting source,car decoration.
- Fluorescent lamp or tubes.

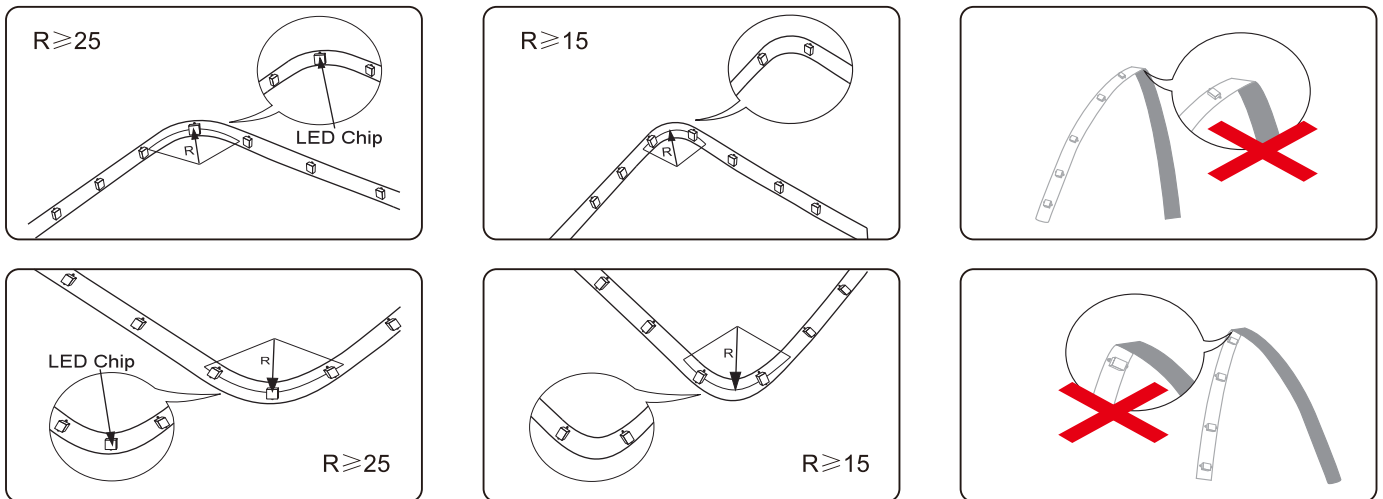


Installation instructions:



⚠ Attention

- 1.Storage Temperature:-40°C~+70°C, Operating Temperature:-25°C~+50°C.
- 2.To protect the three-core chip and ensure the life and reliability of the flexible strip, please be gentle. Squeeze and beat are not allowed.
- 3.Do not touch input port when power is on.
- 4.Please keep 20% power to protect the strip from being influenced by environments.
- 5.Please note the negative and positive polarity when you connect the wires of power supplier to avoid short circuit.
- 6.Make sure that the power supply voltage and the lighting voltage are the same.



Packing Specification

Type	FPC Width LEDs/Metre	Net Weight	Qty	Gross Weight	Demension
Non-Waterproof	10mm/112LED	0.12kg	35pcs	5.35kg	485x215x250mm
Surface Coating	10mm/112LED	0.22kg	35pcs	8.95kg	485x215x250mm



A: One strip in a roll package. Antistatic bag size: 216x245mm.

B: Roll packages in a carton. size: 485x215x250mm.



2835 LED Strips Light

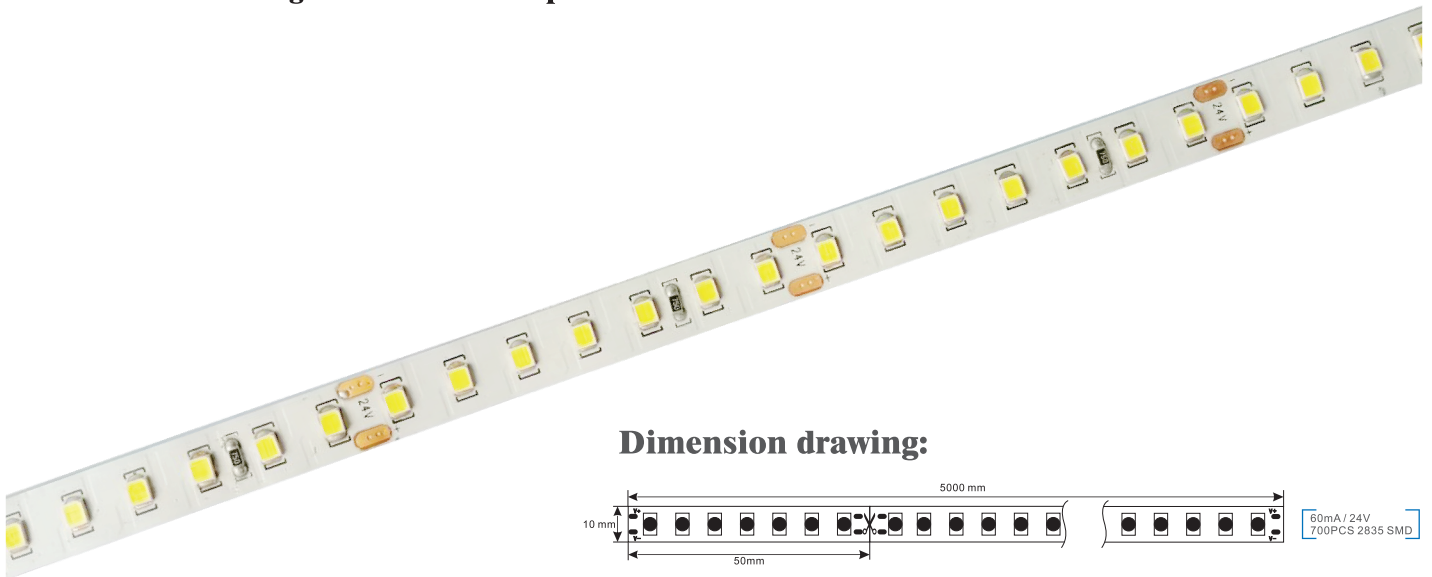
LED KING LED Strip all use of automated production equipment.

ALL SMD LEDs and flexile PCB from famous enterprises offer.

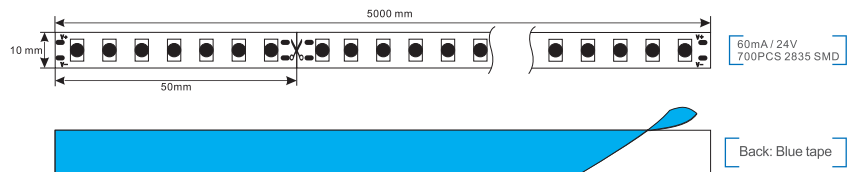
ALL Products PASS with CE RoHS and AK testing standards.

We use SMD 2835 which provide CRI>90(white 3000K-6000K)

The products widely use for the space main lighting auxiliary lighting and decorative lighting of indoor, furniture advertising and commercial space.



Dimension drawing:



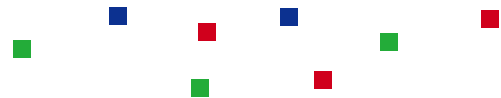
Part No of LED King	Voltage	LED QTY /Metre	Current (A/Metre)	Colour	Power (Watt/Metre)	Lumen /Metre	CRI	IP Rang	Beam Angle	Max Length to Connected
K-2835-D140IP20-60mA-CW	DC24V	140pcs	1.04A	6000K	25W	3600Lm	>90	IP20	120°	≤5m
K-2835-D140IP20-60mA-NW	DC24V	140pcs	1.04A	4000K	25W	3600Lm	>90	IP20	120°	≤5m
K-2835-D140IP20-60mA-WW	DC24V	140pcs	1.04A	3000K	25W	3600Lm	>90	IP20	120°	≤5m
K-2835-D140IP65-60mA-CW	DC24V	140pcs	1.04A	6000K	25W	3600Lm	>90	IP65	120°	≤5m
K-2835-D140IP65-60mA-NW	DC24V	140pcs	1.04A	4000K	25W	3600Lm	>90	IP65	120°	≤5m
K-2835-D140IP65-60mA-WW	DC24V	140pcs	1.04A	3000K	25W	3600Lm	>90	IP65	120°	≤5m

Features:

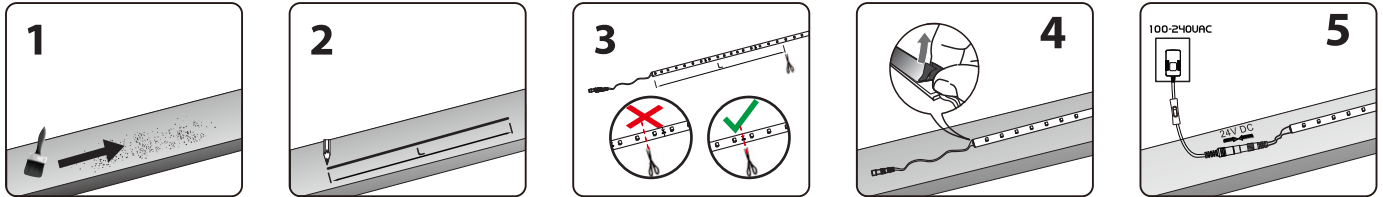
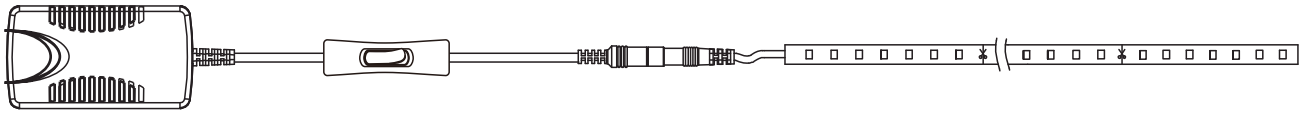
- Extremely energy-efficient.
- Super long lifetime helping to decrease maintenance costs.
- Variety of designs, matching for various applications.
- UV free and no flickering.
- Higher CRI>90.
- IP20、IP65 Rang waterproof.

Applications:

- Widely use for wall lighting.
- Indoor&outdoor decoration.
- Back light of bars.
- LED box.
- Lighting source,car decoration.
- Fluorescent lamp or tubes.

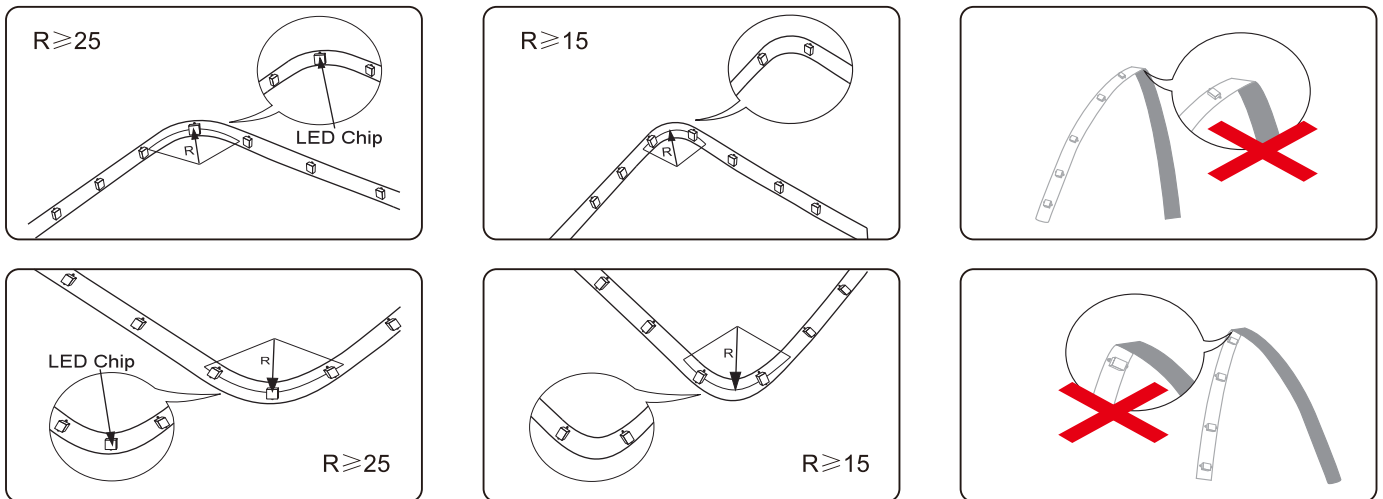


Installation instructions:



⚠ Attention

- 1.Storage Temperature:-40°C~+70°C, Operating Temperature:-25°C~+50°C.
- 2.To protect the three-core chip and ensure the life and reliability of the flexible strip,please be gentle.Squeeze and beat are not allowed.
- 3.Do not touch input port when power is on.
- 4.Please keep 20% power to protect the strip from being influenced by environments.
- 5.Please note the negative and positive polarity when you connect the wires of power supplier to avoid short circuit.
- 6.Make sure that the power supply voltage and the lighting voltage are the same.



Packing Specification

Type	FPC Width LEDs/Metre	Net Weight	Qty	Gross Weight	Demension
Non-Waterproof	10mm/140LED	0.18kg	35pcs	7.35kg	485x215x250mm
Surface Coating	10mm/140LED	0.3kg	35pcs	11.51kg	485x215x250mm



A: One strip in a roll package.Antistatic bag size:216x245mm.

B: Roll packages in a carton.size:485x215x250mm.



2835 LED Strips Light

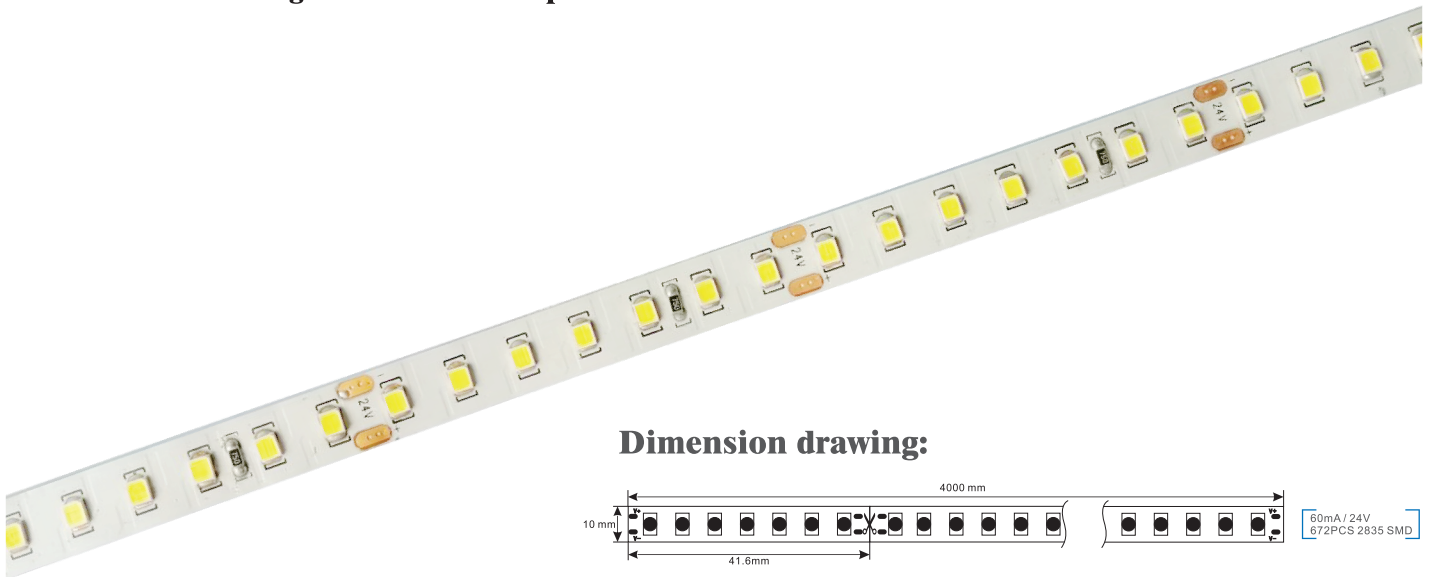
LED KING LED Strip all use of automated production equipment.

ALL SMD LEDs and flexile PCB from famous enterprises offer.

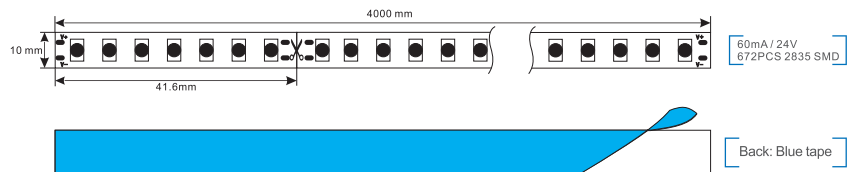
ALL Products PASS with CE RoHS and AK testing standards.

We use SMD 2835 which provide CRI> 90(white 3000K-6000K)

The products widely use for the space main lighting auxiliary lighting and decorative lighting of indoor, furniture advertising and commercial space.



Dimension drawing:



Part No of LED King	Voltage	LED QTY /Metre	Current (A/Metre)	Colour	Power (Watt/Metre)	Lumen /Metre	CRI	IP Rang	Beam Angle	Max Length to Connected
K-2835-D168IP20-60mA-CW	DC24V	168pcs	1.25A	6000K	30W	4200Lm	>90	IP20	120°	≤4m
K-2835-D168IP20-60mA-NW	DC24V	168pcs	1.25A	4000K	30W	4200Lm	>90	IP20	120°	≤4m
K-2835-D168IP20-60mA-WW	DC24V	168pcs	1.25A	3000K	30W	4200Lm	>90	IP20	120°	≤4m
K-2835-D168IP65-60mA-CW	DC24V	168pcs	1.25A	6000K	30W	4200Lm	>90	IP65	120°	≤4m
K-2835-D168IP65-60mA-NW	DC24V	168pcs	1.25A	4000K	30W	4200Lm	>90	IP65	120°	≤4m
K-2835-D168IP65-60mA-WW	DC24V	168pcs	1.25A	3000K	30W	4200Lm	>90	IP65	120°	≤4m

Features:

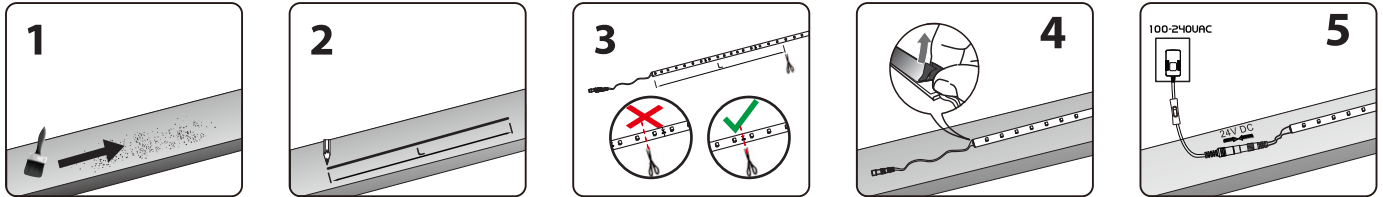
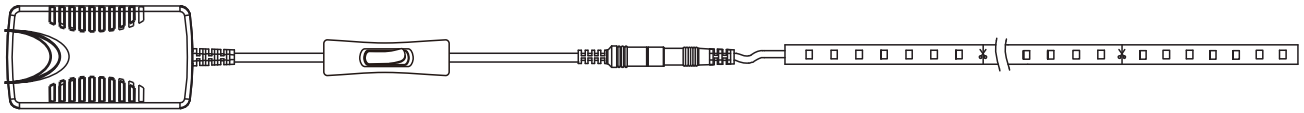
- Extremely energy-efficient.
- Super long lifetime helping to decrease maintenance costs.
- Variety of designs, matching for various applications.
- UV free and no flickering.
- Higher CRI>90.
- IP20、IP65 Rang waterproof.

Applications:

- Widely use for wall lighting.
- Indoor&outdoor decoration.
- Back light of bars.
- LED box.
- Lighting source,car decoration.
- Fluorescent lamp or tubes.

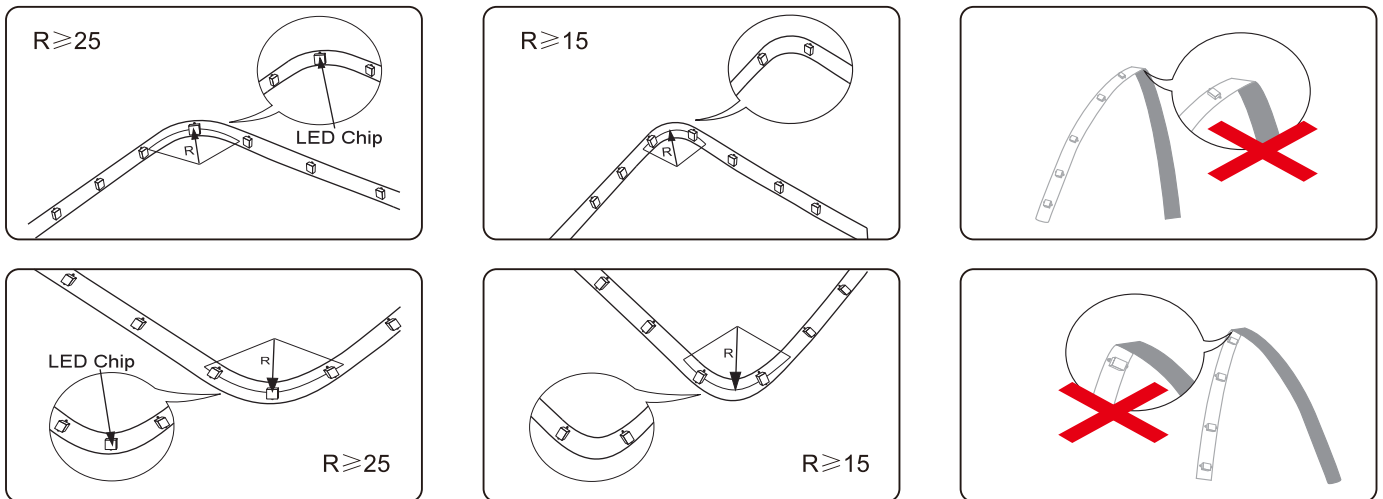


Installation instructions:



⚠ Attention

- 1.Storage Temperature:-40°C~+70°C, Operating Temperature:-25°C~+50°C.
- 2.To protect the three-core chip and ensure the life and reliability of the flexible strip, please be gentle. Squeeze and beat are not allowed.
- 3.Do not touch input port when power is on.
- 4.Please keep 20% power to protect the strip from being influenced by environments.
- 5.Please note the negative and positive polarity when you connect the wires of power supplier to avoid short circuit.
- 6.Make sure that the power supply voltage and the lighting voltage are the same.



Packing Specification

Type	FPC Width LEDs/Metre	Net Weight	Qty	Gross Weight	Demension
Non-Waterproof	10mm/168LED	0.15kg	35pcs	6.25kg	485x215x250mm
Surface Coating	10mm/168LED	0.25kg	35pcs	9.28kg	485x215x250mm



A: One strip in a roll package. Antistatic bag size: 216x245mm.

B: Roll packages in a carton. size: 485x215x250mm.